



**RADIATION
SOLUTIONS INC**

RS-350 Backpack

Human Portable Radiation Detector

APPLICATIONS



FEATURES

RSI Proprietary ADS

- Fast and accurate radiation detection, Nuclide ID, and Dose Rate
- High throughput with essentially zero dead time

Unique and Advanced Algorithm

- Automatic and continuous multi peak gain stabilization on natural isotopes
- Accurately locate and identify hidden and shielded sources with categorized NID (SNM, MED, NORM, IND)
- Anomaly detection with adaptable background techniques to maximize sensitivity and minimize false alarms

Ruggedized NaI(Tl) Detector

- Extreme environment adaptability (-40°C up to 50°C) / (-40°F up to 122°F)

³He Neutron Detector

- Golden standard lightweight and compact design. Extremely rugged and long lasting

Flexible Configurations

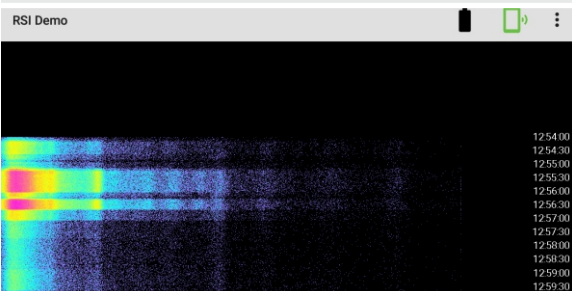
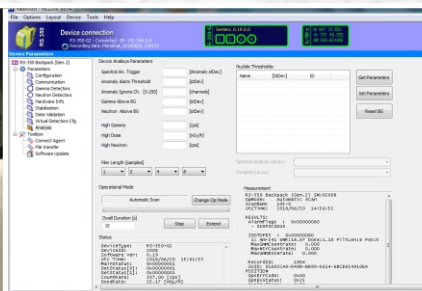
- Multiple detector input with flexible selection between gamma and neutron detectors
- GM detector option for extended dose rate range
- Built-in GPS and external GPS support

Modern Technology for Emergency Response

- Hot-swappable batteries ensure extended operation time and seamless operation between battery swaps
- Advanced networking capability provides instant remote access to and from REACHBACK
- Audible, visual, and vibration alarms on smartphone
- Alarm through headphones for covert operation
- Alarm displays in software lead the User through a typical work flow for streamline alarm response

Human Portable Radiation Detector

The Radiation Solutions model RS-350 Backpack System is a Human Portable Radiation Detector for gamma and neutron detection and identification with built-in GPS. Designed for first responder and law enforcement applications, the RS-350 Backpack is a rugged, self-contained, fast deployable system that exceeds ANSI N42.53. This detector will communicate wirelessly with the Operator to provide radioactive measurement information. The detector can be used with a smartphone that has the RadMobile App loaded onto it. A tablet running Windows 10 and RSI proprietary software RadAssist can also be used to analyze the spectral data.



RS-350 Backpack

Human Portable Radiation Detector

Advanced Software Suite

The RS-350 is compatible with all other RSI mobile, marine and airborne systems through PC software: RadView, RadAssist, and MapAssist. This suite of software allows centralized control and monitoring as well as in-depth data display and analysis.



RadAssist Software

The signature RSI spectroscopy software is a fully functional utility suite that allows full control of the system configuration, settings, and parameters. It also provides in-depth data and spectroscopy analysis including programming utilities.

RadView Software

A streamlined, single screen "operator friendly" interface with selectable modes of operation with alarm displays that lead the User through a typical work flow from initial encounter to reporting/REACHBACK.

MapAssist Software

Allows for central control to monitor all deployed systems on the same map.

RadMobile

A smartphone application used by Operator's to search for radioactive isotopes, monitor a system, and watch for alarms.

Radiation Solutions Inc

Radiation Solutions Inc. (RSI) is specialized in nuclear instrumentation for the detection, measurement and analysis of low-level ionizing radiation from both naturally occurring and man-made sources.

RSI's cutting edge radiation detection technology incorporates a fully digital system design, spectral analysis and advanced data processing. RSI deploys this technology in fixed installed, airborne and mobile systems, portable and handheld spectrometers providing a level of quality previously only attainable in laboratory equipment.

RSI is committed to working as closely as possible with customers in all aspects of the product life cycle including product requirement, application, training, support and product enhancement. Our comprehensive approach results in hardware components and industry leading software techniques that produce outstanding results above expectations.

Gamma Crystal Type and Size

- 3" x 3" NaI (TI) or 2" x 4" NaI (TI)

Energy Range

- 12keV - 3MeV

Energy Resolution

- <7.5%

MCA Channels

- 2048

Stabilization

- Automatic and continuous; no source required

Neutron Detector Type and Size

- 2" dia. x 9" active length ³He (or alternative)

GPS

- Internal

External GPS Support

- NMEA

Internal Data Storage

- 8GB, 24 hours of data

Communication

- BT4.0, WiFi, Cellular Adaptability, Ethernet, USB data storage

Interface

- Android, MS Windows, iOS

Software and App

- RadMobile, RadAssist, Radview, MapAssist

Alarm

- Audio, Visual, Vibration

Protection Rating

- IP65

External Power AC/DC

- Charge/Operation

Battery Type

- LiFePo

Battery Life

- 10 hours

Operating Temperature

- -40°C to +50°C / -40°F to +122°F

Storage Temperature

- -50°C to +50°C / -58°F to +122°F

Operating/Storage Humidity

- 100% non-condensing

Standards

- ANSI N42.53 2013; ANSI N42.42 2012; CE, IEC/EN 60529



RADIATION SOLUTIONS INC.

Corporate Head Office
5875 Whittle Road
Mississauga, ON, CANADA L4Z 2H4

+1 (905) 890-1111
+1 (905) 890-1964
sales@radiationsolutions.ca
radiationsolutions.com