

TESTED AND COMPLIES WITH



**ASTM**  
E3022-18  
Standard

**SPECTROLINE®**  
NDT

# CLASSIC SERIES

## LED INSPECTION LAMP

**CLA-100Z**

- ▶ Nominal steady-state UV-A (365 nm) intensity of **5,700  $\mu\text{W}/\text{cm}^2$**  at 15 in (38 cm)
- ▶ Low visible light emission—less than 0.5 foot-candle (2.2 lux)



**Dust Tight & Water Resistant**



**Fanless & Cool Running**



**Lightweight & Rugged**



**Instant-On Operation**

### ROCKER SWITCH

Easy on/off operation with rear Rocker switch

### RUBBER BUMPER

Protects LED's from damage

### LONG-LASTING UV-A LENSES

Equipped with UV-A Pass Filter

### PISTOL GRIP

Comfortable, balanced control

### ANODIZED ALUMINUM HOUSING

Minimizes corrosion and stands up to years of heavy use



## CLASSIC SERIES CLA-100Z

MODEL	NOMINAL STEADY-STATE UV-A INTENSITY at 15 in (38 cm) ①	UV-A COVERAGE AREA at 15 in (38 cm) at minimum 1,200 $\mu\text{W}/\text{cm}^2$	VISIBLE LIGHT MEASUREMENT
CLA-100Z	5,700 $\mu\text{W}/\text{cm}^2$	6 in (15.25 cm)	>350 foot-candle

① UV-A intensity reading taken with the Spectroline® AccuMAX™ Series meter, and is factory set to the value shown.



Light Source:	2 UV-A LED'S & 1 White LED
Lamp Style:	Cordless lamp
Lamphead Diameter:	4.4 in (11.18 cm)
Length:	6.7 in (17 cm)
Width:	3.4 in ( 8.6 cm)
Height:	7.45 in ( 18.9 cm)
Weight:	2.05 Lb (930 g) (with internal battery)
Power Requirements:	90 - 270 VAC, 50 TO 60 Hz
Run Time:	7 to 8 hours (continuous)
Charge Time:	2 hours

### CLA-100Z

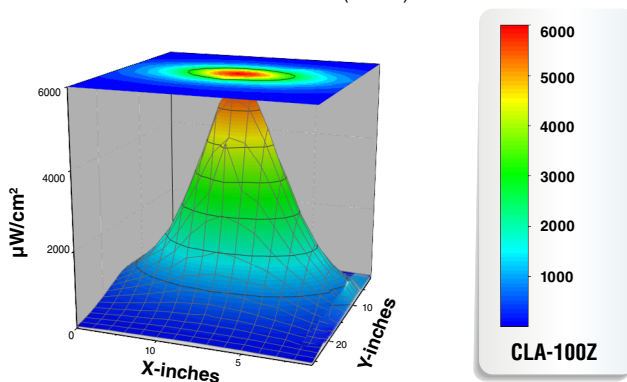
#### Classic Series Dual Function LED Inspection Lamp Kit

Comes complete with Classic Series Dual Function LED Inspection Lamp with lanyard, Smart Charger Power Supply, AC Cord set, UV Absorbing Spectacles, Carrying Case For Spectacles, Protective Carrying Case.

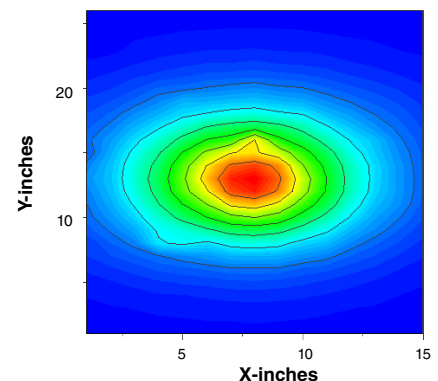


### UV-A Beam Profiles

Surface Contour Profile at 15 in (38 cm)



Top Intensity Profile at 15 in (38 cm)



DISTRIBUTED BY:

[www.Spectro-UV.com](http://www.Spectro-UV.com)  
4 Dubon Ct., Farmingdale, NY 11735  
866-230-7305

NDT  
5/22 A5202022  
PRINTED IN USA